

May 2024



100 N College Row
Brevard, NC 28712
(828) 884-5800
Fax: (828) 884-5840

*Committed to Brevard,
Dedicated to Seniors*

Find us on 



Cottage Block Party

Let's kick off the summer season! Friday, May 24, block party for all Cottage residents. Refreshments served 2:30-3:30 pm, in College View Court cul-de-sac. Sign up at Front Desk and bring a chair!



National Days in May

- 3 Chocolate Custard Day
- 4 Star Wars Day
- 5 Lemonade Day
- 8 Have a Coke Day
- 13 Apple Pie Day
- 15 Straw Hat Day
- 17 Cherry Cobbler Day
- 31 Macaroon Day



Ladies' Luncheon

Tuesday, May 7 **ALL** ladies are invited to a Ladies' Luncheon honoring College Walk mothers at noon, in Main Dining Room. Each resident is permitted one guest. Sign up at Front Desk by Friday, May 3.



Quilt Show

Friday, May 17 travel to Flat Rock for A Garden of Quilts Show. Admission is \$5. Depart at 1:30 pm. Sign up at Front Desk.



Shopping for Flowers

It's time for annuals, perennials and hanging baskets! Friday, May 10 visit Blantyre Station Nursery located in Etowah. Depart at 1 pm. Sign up at Front Desk.



Nueve De Mayo

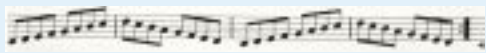
Instead of Cinco de Mayo we are celebrating Nueve de Mayo. Thursday, May 9 drinks are served from 4:15 to 5 pm in Main Lobby, followed by a Mexican Cuisine themed buffet. McFarland USA is at 7 pm, in Auditorium.

Memorial Day

Monday, May 27 the Main Meal is 11:30 am-1 pm, in Main Dining Room. "Placing of the Wreath" at 2 pm, College Walk flagpole followed by the Pledge of Allegiance. *Memphis Belle* is at 6:30 pm, in Auditorium. ***NO Mail Delivery***



Sunday	Monday	Tuesday	Wednesday	Thursday	Friday	Saturday
			<div>1<div>8:00 Continental Breakfast</div><div>9:30 <div>G</div> Grocery Shopping</div><div>10:00 <div>A</div> Exercise with Kerry DVD</div><div>10:30 <div>G</div> Grocery Shopping</div><div>10:50 <div>A</div> Chair Yoga DVD</div><div>11:00 <div>P</div> Blood Pressure Checks</div><div>11:00 <div>M</div> Bocce</div><div>11:00 Dog Visits</div><div>2:00 AAUW Book Club</div><div>2:00 <div>F</div> Sit, Step, and Sing with Debra</div><div>2:30 <div>A</div> Yoga with Lauren</div><div>3:00 <div>E</div> Dominoes</div></div>	<div>2<div>9:15 <div>E</div> Coffee Chat</div><div>9:30 <div>C</div> RC Mass</div><div>11:00 Craft Time with Jean</div><div>11:00 <div>D</div> Wii Bowling</div><div>12:00 Low Vision Class with Leila Knight</div><div>1:00 <div>C</div> Bible Study</div><div>1:00 Bingo with Andy</div><div>1:00 <div>D</div> Knitting Group</div><div>2:00 <div>A</div> Cornhole</div><div>5:30 <div>G</div> TC Library Program</div></div>	<div>3<div>10:00 <div>A</div> Exercise with Kerry DVD</div><div>10:00 <div>G</div> Shopping at Walmart and Belk</div><div>10:30 Book Discussion Group</div><div>11:00 <div>M</div> Bocce</div><div>11:00 <div>A</div> Morning Yoga with Laura</div><div>1:00 <div>F</div> Sit, Step, and Sing with Debra</div><div>1:00 Turning Points</div><div>1:45 <div>A</div> Sit, Step, Sing with Debra</div><div>2:00 <div>E</div> Fun Friday - Chocolate Custard</div><div>3:00 <div>A</div> Consumers Scammed Billions & Scam Prevention Seminar</div><div>6:30 <div>D</div> Billiards</div></div>	<div>4<div>10:00 <div>A</div> Stand & Sit Yoga DVD</div><div>10:30 <div>A</div> Chair Yoga DVD</div><div>1:00 <div>A</div> Ping-Pong</div><div>1:30 <div>D</div> Scrabble</div><div>2:00 <div>E</div> Coffee Chat</div><div>2:00 <div>F</div> Popcorn & Movie in The Inn</div><div>7:00 <div>A</div> Movie</div></div>
<div>5<div>National Lemonade Day</div><div>10:30 Church Service</div><div>11:30 <div>J</div> Main Meal in the Dining Room</div><div>1:30 <div>D</div> Scrabble</div><div>2:30 Snack Time</div><div>3:00 <div>G</div> Self-serve Lemonade</div><div>3:30 <div>A</div> Vespers</div></div>	<div>6<div>9:15 <div>E</div> Coffee Chat</div><div>9:30 <div>G</div> Errands</div><div>10:00 <div>A</div> Exercise with Kerry DVD</div><div>10:50 <div>A</div> Chair Yoga DVD</div><div>11:00 <div>M</div> Bocce</div><div>1:15 <div>A</div> Sit, Step, Sing with Debra</div><div>2:00 <div>A</div> Cornhole</div><div>2:00 <div>F</div> Sit, Step, and Sing with Debra</div><div>3:00 <div>A</div> Musical Performance by Advanced Keyboard Skills II Class</div><div>3:30 <div>E</div> Monday Mixers</div><div>5:30 <div>G</div> Senior Games Closing Ceremonies</div></div>	<div>7<div>9:30 Hubble Group</div><div>9:30 <div>G</div> Shopping at ALDI Grocery Store</div><div>11:00 <div>A</div> Tai Chi with Chris</div><div>11:00 <div>D</div> Vesper Committee Meeting</div><div>12:00 <div>J</div> Ladies Luncheon</div><div>12:00 Low Vision Class with Leila Knight</div><div>1:00 <div>A</div> Ping-Pong</div><div>2:00 <div>C</div> Episcopal Communion</div><div>2:00 <div>D</div> Pinochle</div><div>2:30 <div>E</div> Episcopal Coffee</div><div>3:00 Music with Linda</div><div>7:00 <div>A</div> Movie</div></div>	<div>8<div>8:00 Continental Breakfast</div><div>9:00 <div>A</div> Exercise with Kerry DVD</div><div>9:30 <div>G</div> Grocery Shopping</div><div>10:30 <div>G</div> Grocery Shopping</div><div>11:00 <div>M</div> Bocce</div><div>11:00 <div>A</div> Brevard Academy Travel Band</div><div>11:00 Dog Visits</div><div>2:00 <div>F</div> Sit, Step, and Sing with Debra</div><div>2:30 Traveling Betts Bar The Lodge</div><div>2:30 <div>A</div> Yoga with Lauren</div><div>3:00 <div>E</div> Dominoes</div><div>3:30 Traveling Betts Bar Patio Homes & Cottages</div></div>	<div>9<div>9:15 <div>E</div> Coffee Chat</div><div>9:30 <div>C</div> RC Mass</div><div>10:00 <div>A</div> Line Dancing</div><div>11:00 Craft Time with Jean</div><div>11:00 <div>D</div> Wii Bowling</div><div>1:00 Bible Study</div><div>1:00 Bingo with Andy</div><div>1:00 <div>C</div> First Methodist Gathering and Communion</div><div>1:00 <div>D</div> Knitting Group</div><div>2:00 <div>A</div> Cornhole</div><div>2:30 Scenic Ride for The Inn</div><div>4:15 <div>G</div> Margaritas in the Main Lobby</div></div>	<div>10<div>10:00 <div>A</div> Exercise with Kerry DVD</div><div>10:00 <div>G</div> Shopping at Walmart and Belk</div><div>11:00 <div>M</div> Bocce</div><div>11:00 <div>A</div> Morning Yoga with Laura</div><div>1:00 <div>G</div> Shopping at Blantyre Station Nursery</div><div>1:00 <div>F</div> Sit, Step, and Sing with Debra</div><div>1:00 Turning Points</div><div>1:45 <div>A</div> Sit, Step, Sing with Debra</div><div>2:00 <div>E</div> Fun Friday - Birthday Party</div><div>6:30 <div>D</div> Billiards</div></div>	<div>11<div>10:00 <div>A</div> Stand & Sit Yoga DVD</div><div>10:30 <div>A</div> Chair Yoga DVD</div><div>1:00 <div>A</div> Ping-Pong</div><div>1:30 <div>G</div> Beauty and the Beast at Brevard High School</div><div>1:30 <div>D</div> Scrabble</div><div>2:00 <div>E</div> Coffee Chat</div><div>2:00 <div>F</div> Popcorn & Movie in The Inn</div><div>7:00 <div>A</div> Movie</div></div>
<div>12<div>Happy Mother's Day!</div><div>10:30 Church Service</div><div>11:30 <div>J</div> Main Meal in the Dining Room</div><div>1:30 <div>D</div> Scrabble</div><div>2:30 Snack Time</div><div>3:30 <div>A</div> Vespers</div></div>	<div>13<div>9:15 <div>E</div> Coffee Chat</div><div>9:30 <div>G</div> Errands</div><div>9:30 PEO Group</div><div>10:00 <div>A</div> Exercise with Kerry DVD</div><div>10:50 <div>A</div> Chair Yoga DVD</div><div>11:00 <div>M</div> Bocce</div><div>1:15 <div>A</div> Sit, Step, Sing with Debra</div><div>2:00 <div>A</div> Cornhole</div><div>2:00 <div>F</div> Sit, Step, and Sing with Debra</div><div>2:30 Apple Pie</div><div>3:30 <div>E</div> Monday Mixers</div><div>6:30 <div>A</div> Musical Performance by Blue Ridge Ringers</div></div>	<div>14<div>9:30 Hubble Group</div><div>9:40 <div>G</div> Tour and Demo at Mud Dabbers Pottery</div><div>11:00 <div>A</div> Tai Chi with Chris</div><div>1:00 Bingo with Andy</div><div>1:00 <div>A</div> Ping-Pong</div><div>2:00 <div>C</div> Episcopal Communion</div><div>2:00 Pinochle</div><div>2:30 <div>E</div> Episcopal Coffee</div><div>3:00 <div>F</div> Listen and Laugh with Carol</div><div>6:45 <div>A</div> Movie</div><div>7:00 <div>G</div> Parker Concert Hall at BMC</div></div>	<div>15<div>8:00 Continental Breakfast</div><div>9:30 <div>G</div> Grocery Shopping</div><div>10:00 <div>A</div> Exercise with Kerry DVD</div><div>10:00 Recycled Card Group</div><div>10:30 <div>G</div> Grocery Shopping</div><div>10:50 <div>A</div> Chair Yoga DVD</div><div>11:00 <div>P</div> Blood Pressure Checks</div><div>11:00 <div>M</div> Bocce</div><div>11:00 Dog Visits</div><div>2:00 <div>F</div> Sit, Step, and Sing with Debra</div><div>2:30 <div>A</div> Yoga with Lauren</div><div>3:00 <div>E</div> Dominoes</div></div>	<div>16<div>9:15 <div>E</div> Coffee Chat</div><div>9:30 <div>C</div> RC Mass</div><div>10:00 <div>A</div> Line Dancing</div><div>11:00 Craft Time with Jean</div><div>11:00 <div>D</div> Wii Bowling</div><div>12:45 <div>G</div> Sit, Step, Sing Class at H-ville Mall</div><div>1:00 Bible Study</div><div>1:00 Bingo with Andy</div><div>1:00 <div>D</div> Knitting Group</div><div>3:00 <div>A</div> Pardee Health Talk</div><div>5:00 Brew Crew in PDR</div></div>	<div>17<div>10:00 <div>A</div> Exercise with Kerry DVD</div><div>10:00 <div>G</div> Shopping at Walmart and Belk</div><div>11:00 <div>M</div> Bocce</div><div>11:00 <div>A</div> Morning Yoga with Laura</div><div>1:00 Turning Points</div><div>1:30 <div>G</div> A Garden of Quilts Show in Hendersonville</div><div>2:00 <div>E</div> Fun Friday - Cherry Cobbler</div><div>6:30 <div>D</div> Billiards</div></div>	<div>18<div>10:00 <div>A</div> Stand & Sit Yoga DVD</div><div>10:30 <div>A</div> Chair Yoga DVD</div><div>1:00 <div>A</div> Ping-Pong</div><div>1:30 <div>D</div> Scrabble</div><div>2:00 <div>E</div> Coffee Chat</div><div>2:00 <div>F</div> Popcorn & Movie in The Inn</div><div>7:00 <div>A</div> Movie</div></div>
<div>19<div>10:30 Church Service</div><div>11:30 <div>J</div> Main Meal in the Dining Room</div><div>1:30 <div>D</div> Scrabble</div><div>2:30 <div>G</div> Brevard Philharmonic at Porter Center</div><div>2:30 Snack Time</div><div>3:30 <div>A</div> Vespers</div></div>	<div>20<div>9:15 <div>E</div> Coffee Chat</div><div>9:30 <div>G</div> Errands</div><div>10:00 <div>A</div> Exercise with Kerry DVD</div><div>10:50 <div>A</div> Chair Yoga DVD</div><div>11:00 <div>M</div> Bocce</div><div>11:00 Veterans Coffee and Conversation</div><div>2:00 <div>A</div> Cornhole</div><div>3:30 <div>E</div> Monday Mixers</div></div>	<div>21<div>9:30 Hubble Group</div><div>11:00 <div>A</div> Tai Chi with Chris</div><div>11:30 <div>G</div> Noontime Notions at Transylvania County Library</div><div>1:00 Bingo with Andy</div><div>1:00 <div>A</div> Ping-Pong</div><div>2:00 <div>C</div> Episcopal Communion</div><div>2:00 Pinochle</div><div>2:30 <div>E</div> Episcopal Coffee</div><div>3:00 Music with Linda</div><div>3:00 <div>A</div> Readers Theatre Performance</div><div>7:00 <div>A</div> Movie</div></div>	<div>22<div>9:30 <div>G</div> Grocery Shopping</div><div>10:00 <div>A</div> Exercise with Kerry DVD</div><div>10:30 <div>G</div> Grocery Shopping</div><div>10:50 <div>A</div> Chair Yoga DVD</div><div>11:00 <div>M</div> Bocce</div><div>11:00 Dog Visits</div><div>1:15 UU's</div><div>2:00 <div>F</div> Sit, Step, and Sing with Debra</div><div>2:30 Traveling Betts Bar The Lodge</div><div>2:30 <div>A</div> Yoga with Lauren</div><div>3:00 <div>E</div> Dominoes</div><div>3:30 Traveling Betts Bar Patio Homes & Cottages</div></div>	<div>23<div>9:15 <div>E</div> Coffee Chat</div><div>9:30 <div>C</div> RC Mass</div><div>10:00 <div>A</div> Line Dancing</div><div>11:00 Craft Time with Jean</div><div>11:00 <div>D</div> Wii Bowling</div><div>12:00 Pizza Party</div><div>1:00 Bible Study</div><div>1:00 Bingo with Andy</div><div>1:00 <div>D</div> Knitting Group</div><div>2:00 <div>A</div> Cornhole</div><div>2:30 Scenic Ride for The Inn</div><div>5:00 Vino Ladies Guild in PDR</div></div>	<div>24<div>10:00 <div>A</div> Exercise with Kerry DVD</div><div>10:00 <div>G</div> Shopping at Walmart and Belk</div><div>11:00 <div>M</div> Bocce</div><div>11:00 <div>A</div> Morning Yoga with Laura</div><div>1:00 <div>F</div> Sit, Step, and Sing with Debra</div><div>1:00 Turning Points</div><div>1:45 <div>A</div> Sit, Step, Sing with Debra</div><div>2:00 <div>E</div> Fun Friday - Fruit Tray</div><div>2:30 Cottage Block Party in College View Court</div><div>6:30 <div>D</div> Billiards</div></div>	<div>25<div>10:00 <div>A</div> Stand & Sit Yoga DVD</div><div>10:30 <div>A</div> Chair Yoga DVD</div><div>1:00 <div>A</div> Ping-Pong</div><div>1:30 <div>D</div> Scrabble</div><div>2:00 <div>E</div> Coffee Chat</div><div>2:00 <div>F</div> Popcorn & Movie in The Inn</div><div>7:00 <div>A</div> Movie</div></div>
<div>26<div>10:30 Church Service</div><div>11:30 <div>J</div> Main Meal in the Dining Room</div><div>1:30 <div>D</div> Scrabble</div><div>2:30 Snack Time</div><div>3:30 <div>A</div> Vespers</div><div>4:00 <div>E</div> Vesper Committee Meeting</div></div>	<div>27<div>Memorial Day - NO Mail</div><div>9:15 <div>E</div> Coffee Chat</div><div>10:00 <div>A</div> Exercise with Kerry DVD</div><div>10:00 <div>L</div> Library Committee Meeting</div><div>10:50 <div>A</div> Chair Yoga DVD</div><div>11:00 <div>M</div> Bocce</div><div>11:30 <div>J</div> Main Meal in the Dining Room</div><div>1:15 <div>A</div> Sit, Step, Sing with Debra</div><div>2:00 <div>A</div> Cornhole</div><div>2:00 Placing of the Wreath at CW Flagpole</div><div>2:00 <div>F</div> Sit, Step, and Sing with Debra</div><div>6:30 <div>A</div> Movie</div></div>	<div>28<div>9:30 Hubble Group</div><div>11:00 <div>A</div> Tai Chi with Chris</div><div>11:30 <div>G</div> Picnic beside lake in Laurel Lake Estates (Brevard)</div><div>1:00 Bingo with Andy</div><div>1:00 <div>A</div> Ping-Pong</div><div>2:00 <div>C</div> Episcopal Communion</div><div>2:00 Land of Waterfalls Dulcimer Group</div><div>2:00 Pinochle</div><div>2:30 <div>E</div> Episcopal Coffee</div><div>7:00 <div>A</div> Movie</div></div>	<div>29<div>8:00 Continental Breakfast</div><div>9:30 <div>G</div> Grocery Shopping</div><div>10:00 <div>A</div> Exercise with Kerry DVD</div><div>10:30 <div>G</div> Grocery Shopping</div><div>10:50 <div>A</div> Chair Yoga DVD</div><div>11:00 <div>M</div> Bocce</div><div>11:00 Dog Visits</div><div>11:30 The Inn Pizza Party</div><div>2:00 AAUW Book Club</div><div>2:00 <div>F</div> Sit, Step, and Sing with Debra</div><div>2:30 <div>A</div> Yoga with Lauren</div><div>3:00 <div>E</div> Dominoes</div></div>	<div>30<div>9:15 <div>E</div> Coffee Chat</div><div>9:30 <div>C</div> RC Mass</div><div>10:00 <div>A</div> Line Dancing</div><div>11:00 Craft Time with Jean</div><div>11:00 <div>D</div> Wii Bowling</div><div>1:00 Bible Study</div><div>1:00 Bingo with Andy</div><div>1:00 <div>D</div> Knitting Group</div><div>2:00 <div>A</div> Cornhole</div><div>5:00 Vino Ladies Guild in PDR</div><div>6:30 <div>A</div> Musical Performance by Musicke Antiqua</div></div>	<div>31<div>10:00 <div>A</div> Exercise with Kerry DVD</div><div>10:00 <div>G</div> Shopping at Walmart and Belk</div><div>11:00 <div>M</div> Bocce</div><div>11:00 <div>A</div> Morning Yoga with Laura</div><div>1:00 <div>A</div> Sit, Step, and Sing with Debra</div><div>1:00 Turning Points</div><div>1:45 <div>F</div> Sit, Step, Sing with Debra</div><div>2:00 <div>E</div> Fun Friday - Macaroons</div><div>3:00 <div>A</div> Readers Theatre Performance</div><div>6:30 <div>D</div> Billiards</div></div>	



Music and More

3 - "Consumers Scammed Billions & Scam Prevention"

seminar with Julie Goodwin at 3 pm, in Auditorium.

6 - Musical performance by **Advanced Keyboard Skills II Class** from Blue Ridge Community College at 3 pm, in Auditorium.

8 - Musical performance by **Brevard Academy Travel Band** at 11 am, in Auditorium.

13 - Musical performance by **Blue Ridge Ringers** at 6:30 pm, in Auditorium.

16 - Pardee Health Talk Series **"Stroke Prevention and Aneurysm Treatments"** at 3pm, in Auditorium.

21 - Readers' Theatre performance **Over the River and Through the Woods** by Joe DiPietro at 3 pm, in Auditorium

30 - Musical performance by **Musicke Antiqua** at 6:30 pm, in Auditorium.

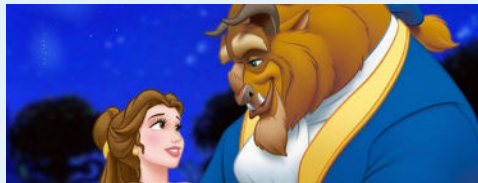
31 - Readers' Theatre performance **Over the River and Through the Woods** by Joe DiPietro at 3 pm, in Auditorium.

Mud Dabbers Pottery

Tuesday, May 14 tour and demonstration at Mud Dabbers Pottery in Brevard. Depart at 9:40 am. Sign up at Front Desk.

Beauty and the Beast

Saturday, May 11 Brevard High School Performing Arts presents *Beauty and the Beast* in Brevard High Auditorium. Tickets are \$13. Depart at 1:30 pm. Sign up and pay at Front Desk.



Picnic Time

It's our first picnic of the season! Tuesday, May 28 stay in Brevard for a picnic by the lake in Laurel Lake Estates. Pack your lunch, College Walk provides drinks. Depart at 11:30 am. Sign up at Front Desk.



May is a fun time to see flower beds and gardens in full bloom!

May Birthdays

4	Mary Louise Brorein
7	Robert Miller
14	Edith Westbrook
15	Susan Becker
17	Reba Furches
17	Anita Stark
19	Janet Benway
20	Bob Bryant
22	Patricia Parker
23	Celia Ansley
24	Leo Gariazzo
24	David Griffiths
24	Vilma Nau
24	Ruth Powers
24	Margaret Ritter
25	Carmella Mehalic
25	Gloria Sanders
28	Marilyn Carlson
27	Betty Jones



Happy Anniversary!

8	Ron & Nanc Marshall
14	Jim & Judy Pierce
17	Richard Gibson & Reinhard Unger

